

# CHAPTER CHATTER

Chapter Number 78

Flying Through History

## The Big Move

A dozen Chapter members were lucky enough to participate in assisting Terry Miller move his Airplane project (TM5) from out of his basement to his garage. The move was accomplished on a lovely first Saturday in April with out a hitch. ✈

## Chapter Minutes

The Meeting was called to order at 1942 EDST by Chapter President Tom Russell.

Members present included: David Hudnut, Lino Flego, Joseph Schfavoni, Glenn Murray, Guy Ullman, Rick Eggleston, Bob McCauliffe (V.P.), Steve Wiles, Ron Gray, Tom Russell (Pres.), Jim Boxmeyer, Dennis Womack-Kalla, David Metzler, Harry Beard, Otto Blavier (Tres.), Beth Signore, Martin Cook (Technical Advisor), Michael Ceglowski, Steve Gagman, Al McCarty, Jan Thorsten and Harry Beard.

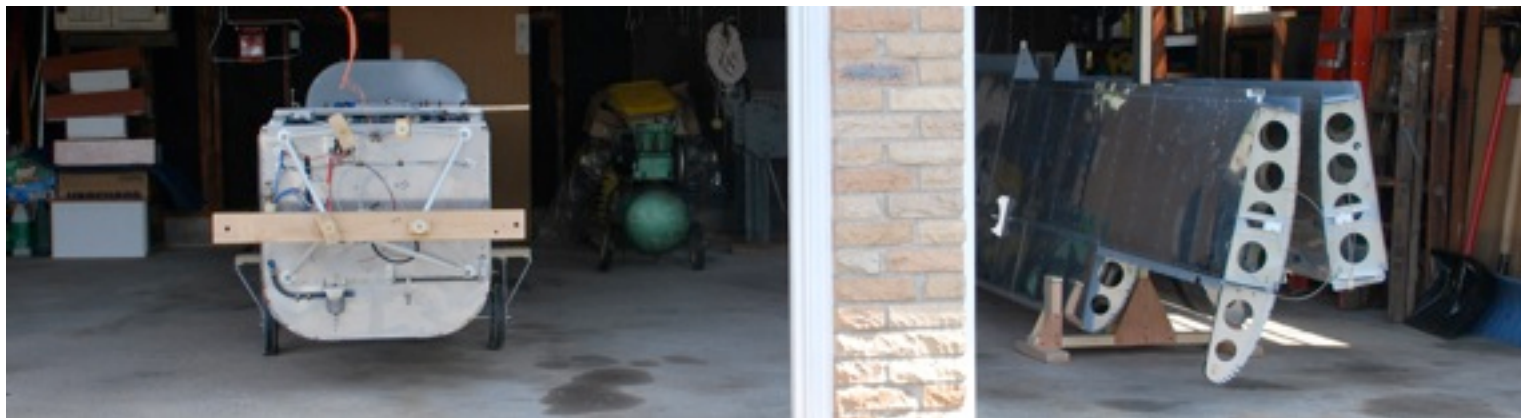
Guest speaker and former Chapter 78 member: Terry Miller  
Guest: Yonsuk Miller (wife and building assistant of our guest speaker)



*Above: Terry Miller (Right) pointing out some of the important safety features he has included in his design.*

*Below: Mission Accomplished. .... More Photos Page 7*

Terry Miller was introduced and commenced his presentation immediately. The topic was Terry's current A/C project the TM5. Terry has designed and built four other aircraft over the years and has worked in aviation engineering, design, test, development and education for over half a century. During the Viet Nam



Conflict he was offered an undefined position in the U.S. Army. The U. S. Navy (his employer at the time) overruled the Army and insisted that he be retained in his then current position at Warminster.

The TM5 is an interesting "high" wing (parasol) tandem tail dragger ("conventional" gear). Construction material is aluminum and fabrication is by thousands of expertly driven rivets courtesy of his lovely and talented wife Yonsuk. The craft is an excellent expression of Terry's will, skill, desires and experience. Safety, economy of operation and the joy of flight trumped other operational choices.

Terry gave a general description and then went into his thinking about wing design and force control in the fuselage. His goal is to keep airflow laminar as long as possible in order to be both efficient in cruise and slow on touch down. The wing is basically rectangular with a rectangular cutout on the central trailing edge which facilitates ease of entry and exit from the aft pilot position. The front cockpit is ahead of the wing and is also very accessible. Both pilot positions allow a fully erect standing posture.

The fuselage is unique in that it has very robust wing mounting struts that act as roll over protection as well. Head on force is controlled by "V" braces ahead of the occupants that direct potential crash energy around them. Hinged cockpit access hatches are easily replaced with aluminum plugs for solo operation (Fwd.) or storage (Fwd. and Aft).

Power will be provided by a Continental O-200 that was fabricated by Mattatuck from "Experimental" parts shipped from Alabama. F.F. is expected to be in the area of 4.5/hr with a cruise of 100 kts. The journey, not the destination, is the objective. Wind blast is managed by wing elevation, careful screen design and a very light weight and easily removable turtle deck. There will be a generous storage area behind the aft occupant, accessible via a hinged seat back.

There are so many well thought out features including over sized tires, Grove aluminum spring main gear, king sized inspection/maintenance panels etc. that I could go on and on. This is not a simple machine but then, isn't that a big part of the joy of home building?

This project is a mechanical "mirror", if you will, that well reflects spirit and intellect of Terry Miller.

Terry is also a skilled speaker who also answered all of our questions thoughtfully. The evening went by at the speed of light and the meeting was adjourned at 2108 DST by President tom Russell.



**Post script:** about a dozen of us were fortunate enough to be entrusted with the safe relocation of the TM5 from Terry's basement. It was a delight to actually see the superb craftsmanship and get some more inside information about its construction progress. The Millers were kind enough to provide a delicious lunch for us all and then some more stories about Terry's work experiences. Thank you Terry and Yonsuk!

**Post, post script:** The Chapter visited John Desmond's Storage and restoration facility in New Britain, Pa. on Saturday, April 16th. John has hosted us several times and we were all very impressed with his collection and especially with his progress on the (wooden) Lockheed Vega. A great time was had by all. Thank you too John! *GU* ✈

Fun Link - 787 link <http://www.youtube.com/watch?v=iqOV6a0w544&hd=1>

## Chapter Visits Desmond Collection

Mr Desmond and friends have taken on a new project since our last visit. Their newest restoration/build project is a Lockheed Vega. Mr. Desmond has a small section of fuselage, some tail feathers and the wing of an old derelict he found in California to work with. He also has a complete set of plans. So with plans and a few parts they are starting to construct the fuselage. The Vega is an all wood airplane with plywood skins nailed to formers. Every visit gets better. Always a special treat for Chapter 78. ➔



**Rally GA at Queen City Airport  
May 7, 2011 - 3:30PM to 4:30PM**

Please RSVP and direct any event questions/concerns to [events@aopa.org](mailto:events@aopa.org). Be sure to include "PA" in the subject line if you plan to attend. Airplane parking is available for the day at no charge



STAN STOKES AVIATION ART - Wiley's Wild Ride (Lockheed Vega)



### EBAY VALUES

- ❖ Craftsman 10" table saw
- ❖ Delta 12" portable planer
- ❖ Penn State planer
- ❖ Shop fox oscillating drill press
- ❖ Craftsman compound miter saw
- ❖ Craftsman radial saw
- ❖ Delta mini-lathe

Contact-  
Beth Frick Signore  
267-746-2788  
[bethwhir39@yahoo.com](mailto:bethwhir39@yahoo.com)

## Unusual Runway

**Barra Airport** ([IATA: BRR](#), [ICAO: EGPR](#)) is a short-runway airport situated in the wide shallow bay of Tragic Mhor at the north tip of the island of Barra in the Outer Hebrides, Scotland. The Airport is unique, being the only one in the world where scheduled flights use a beach as the runway.

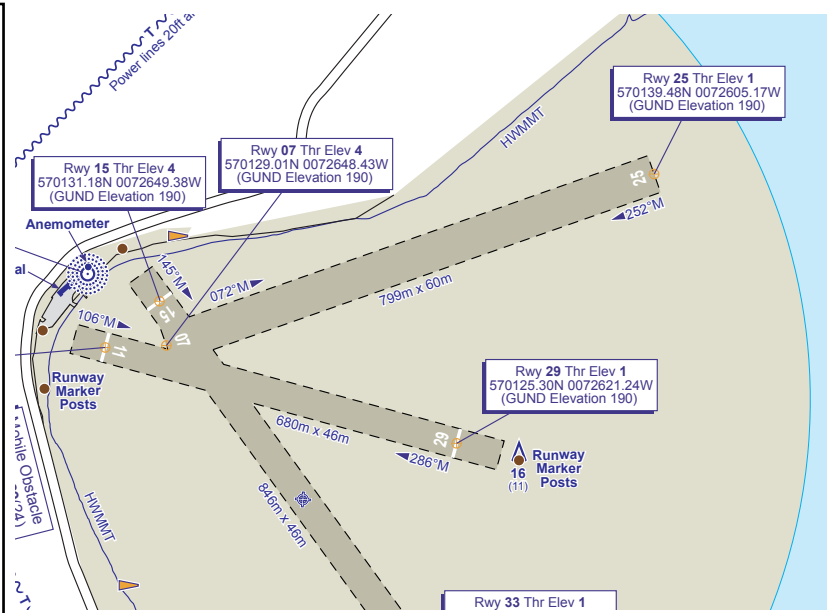
The beach is set out with three runways, marked by wooden poles at their ends. This allows the [Twin Otters](#) that serve the airport to almost always land into the wind. At high tide these runways are under the sea - flight times vary with the tide. Emergency flights occasionally operate at night from the airport, with vehicle lights used to illuminate the runway and reflective strips laid on to the beach. ✈



*Note schedules: Same Flight Numbers Depart for Glasgow at Different Times to Account for Tides.*

### Glasgow Intl.

BE6852	09:40	10:45	. . . . .	Sa . . . . .	- . . . .	11-Jun-11 - 11-Jun-11
BE6852	09:40	10:45	. . . . .	Sa . . . . .	- . . . .	06-Aug-11 - 06-Aug-11
BE6852	10:20	11:30	. . . . .	Sa . . . . .	- . . . .	05-Nov-11 - 05-Nov-11
BE6852	11:00	12:05	. . . . .	F . . . . .	- . . . .	08-Jul-11 - 08-Jul-11
BE6852	11:00	12:10	. . . . .	F Sa . . . . .	- . . . .	24-Dec-11 - 30-Dec-11
BE6852	11:00	12:10	. . . . .	T . . . . .	- . . . .	03-Jan-12 - 03-Jan-12
BE6852	11:10	12:15	M . . . . .	. . . . .	- . . . .	05-Sep-11 - 05-Sep-11
BE6852	11:40	12:45	M T W T F Sa . . . . .	. . . . .	- . . . .	22-Jul-11 - 01-Aug-11
BE6852	11:40	12:45	M T . . . . .	. . . . .	- . . . .	26-Sep-11 - 27-Sep-11
BE6852	11:40	12:50	M T W T F . . . . .	. . . . .	- . . . .	21-Nov-11 - 25-Nov-11
BE6852	11:40	12:45	M . . . . .	T F Sa . . . . .	- . . . .	20-May-11 - 10-Jun-11
BE6852	11:40	12:45	M . . . . .	T F . . . . .	- . . . .	15-Aug-11 - 22-Aug-11



# For Sale



## MONERAI "P" Sailplane KIT

Serial No. 126 - Parts to make 1 %

### Wing:

- 2 spars as a pair with lightening holes according to dwg, holes are polished, rib
- rivet holes drilled, knuckles attached, and reinforcement steel plates are in place
- and dihedral set. Ready for ribs.
- ribs for 3 Wing panels (plus a few With some corrosion).
- 2 sets of trailing edge spars, untouched.
- 2 sets skins, untouched, one as relaxed roll.
- 2 sets aileron/flap, untouched.
- 2 sets push rods and end fittings.

### Fuselage:

- 2 Welded trusses (one factory Welded) some surface rust.
- 1 pod, untouched.
- 2 tinted canopy, untouched.
- 1 canopy bow Welded steel.
- 2 sets of controls Welded (one is factory Welded)
- 2 sets pushrods, untouched.
- 2 Wheels (one steel) and 2 ties.

### Boom Tube:

- 2 ea, 1 untouched, some Work on second.
- mounting & tail boom attachment fittings, one set machined, second set some work done.
- 2 sets of tail boom bearings.

### Tail:

- 2 sets boom tube and ribs, one untouched
- 2 sets skins.

### Power Pod:

- Zenoah engine, mounted on pylon with muffler and fiberglass shell faring ( It was
- Monnett's original as mounted on his -- N32MX).
- propeller Wood (Monnett 33 X 14).
- no fuel tank or controls.

### Misc.:

- one/ plus set of hardware (nuts, bolts, rivets, slide blocks, etc.).
- wing fixture made of particleboard according to plans (very heavy)
- seat sling.
- some 4130 tubing.
- plans (several sets), manuals and many news letters.

### Not Included:

- no bonding epoxy.
- no instrumentation.
- no building logs

**FOR SALE**

**Schweitzer 1-26A Serial # 12**

Basic instruments, Left Wing Leading Edge Repaired,

Fuselage needs recovered.

Located North of Philadelphia

**Al McCarty**

[almccarQ@enter.net](mailto:almccarQ@enter.net)

Home: 215-453-7602

Cell: 267-772-1052



**FOR SALE**

**VP-1 PROJECT**

**Calendar**

APRIL 30 ----- MASSEY, MD  
CHILI FESTIVAL FLY-IN – MASSEY AIR MUSEUM  
MASSEY AERODROME (MD1)  
[www.masseyaero.org](http://www.masseyaero.org)

APRIL 30/MAY 1 ----- SOUTHAMPTON, NJ  
9<sup>TH</sup> ANNUAL FARM FUN DAY  
JACK ALLEN MEMORIAL MUSEUM – ALLEN AIRSTRIP (3NJ9)  
609/267-8382

MAY 7 ----- SOUTHAMPTON, NJ  
ALLEN AIRSTRIP (3NJ9) PANCAKE BREAKFAST  
609/267-8382

MAY 8 ----- WOODBINE, NJ  
EAA CHAPTER 287 – FLY-IN BREAKFAST  
@ WOODBINE MUNICIPAL AIRPORT (OBI)  
609/780-3410

MAY 14 ----- TOUGKENMON, PA  
EAA CHAPTER 240 – PANCAKE BREAKFAST FLY-IN  
NEW GARDEN AIRPORT (N57)  
[www.eaa240.org](http://www.eaa240.org)

MAY 20 – 21, 2011 ----- CAMBRIDGE, MD  
43<sup>RD</sup> ANNUAL ANTIQUE FLY-IN – HORN POINT AERODROME  
38 35.4 N – 76 08.2 W – Rain Date – May 22<sup>ND</sup>  
Sponsored by Potomac Antique Aero Squadron  
Art Kudner – 410/310-0159 – [Arthur\\_kudner@comcast.net](mailto:Arthur_kudner@comcast.net)

MAY 28-29, 2011 ----- MILLVILLE, NJ  
MILLVILLE ARMY AIRFIELD MUSEUM – WHEELS & WINGS  
**SHOW w/BLUE ANGLES – MILLVILLE AIRPORT  
(MIV)**

JUNE 4-5, 2011 ----- CROSS KEYS, NJ  
EAA CHAPTER 216 ANNUAL PANCAKE FLY-IN BREAKFAST  
CROSS KEYS AIRPORT (17N) @ THE BOB McGUIGAN  
HANGAR  
TWO DAYS RAIN or SHINE –  
BREAKFAST SERVED 8:00 TO 11:00 AM – by donation  
PRESIDENT HERMAN JUNKERMAN – 856/881-3459  
[hermanlj13@verizon.net](mailto:hermanlj13@verizon.net)

JUNE 4 – 5 -----  
GETTYSBURG, PA  
EAA CHAPTER 1041 FLY-IN/DRIVE-IN PANCAKE  
BREAKFAST  
GETTYSBURG REGIONAL AIRPORT (W05)  
717/334-3794 – 717/637-3741

JUNE 11 ----- SOUTHAMPTON, NJ  
ALLEN AIRSTRIP (3NJ9) PANCAKE BREAKFAST  
609/267-8382

JUNE 11 - 12 ----- TOUGKENMON, PA  
ANNUAL AIRSHOW NEW GARDEN AIRPORT  
PLUS - EAA CHAPTER 240 – PANCAKE BREAKFAST  
NEW GARDEN AIRPORT (N57)  
[www.eaa240.org](http://www.eaa240.org)

JUNE 12 ----- CROSS  
KEYS, NJ  
EAA CHAPTER 216 YOUNG EAGLES DAY  
CROSS KEYS AIRPORT (17N) –  
DAN MARCHETTI – COORDINATOR – 856/881-8343  
VOLUNTEERS NEEDED – CONTACT DAN IF YOU CAN

HELP  
PRESIDENT HERMAN JUNKERMAN – 856/881-3459  
[hermanlj13@verizon.net](mailto:hermanlj13@verizon.net)

JUNE 12 ----- WOODBINE, NJ  
EAA CHAPTER 287 – FLY-IN BREAKFAST  
@ WOODBINE MUNICIPAL AIRPORT (OBI)  
609/780-3410

JUNE 17-18-19, 2011 ----- WELLSVILLE, PA  
FATHERS DAY FLY-IN @ FOOTLIGHT RANCH  
SHREVEPORT NORTH AIRPORT (62PA)  
717/432-4441- [www.footlightranch.com](http://www.footlightranch.com)

JUNE 25 ----- PITTSVILLE, MD  
AIRPLANES & AIRSTREAMS – COVERED DISH FLY-IN LUNCH  
& AIRSTREAM RALLY - (6MD8) AIRSTRIP -  
Art Kudner – 410/310-0159 – [Arthur\\_kudner@comcast.net](mailto:Arthur_kudner@comcast.net)

JULY 9 ----- TOUGKENMON, PA  
EAA CHAPTER 240 – PANCAKE BREAKFAST FLY-IN  
NEW GARDEN AIRPORT (N57)  
[www.eaa240.org](http://www.eaa240.org)

JULY 9 ----- SOUTHAMPTON, NJ  
ALLEN AIRSTRIP (3NJ9) PANCAKE BREAKFAST  
609/267-8382

JULY 10 ----- WOODBINE, NJ  
EAA CHAPTER 287 – FLY-IN BREAKFAST  
@ WOODBINE MUNICIPAL AIRPORT (OBI)  
609/780-3410

JULY 21-23 ----- BRODHEAD, WI  
EAA CHAPTER 432 ANNUAL PIETENPOL FLY-IN  
BRODHEAD AIRPORT (C37)

**JULY 25-31, 2011 ----- OSHKOSH, WI**  
**EAA AIRVENTURE – WITTMAN REGIONAL  
AIRPORT (OSH) [www.AirVenture.org](http://www.AirVenture.org)**

AUGUST 13 ----- SOUTHAMPTON, NJ  
ALLEN AIRSTRIP (3NJ9) PANCAKE BREAKFAST  
609/267-8382

SEPTEMBER – TBA ----- MASSEY, MD  
ANNUAL GATHERING OF L-BIRDS –  
John Seidts – 443/250-9037 -

SEPTEMBER 3 –5 ----- WILDWOOD, NJ  
2011 AIRFEST – NASW – Tentative – Collins  
Foundation Aircraft  
CAPE MAY COUNTY AIRPORT (WWD) –  
609/886-8787

SEPTEMBER 3 –5 ----- WILDWOOD, NJ  
2011 AIRFEST – NASW – Collins Foundation  
Aircraft CAPE MAY COUNTY AIRPORT (WWD) –  
609/886-8787

SEPTEMBER 9-10-11 - ----- WELLSVILLE, PA  
AERONCA – TRIKE FLY-IN @ FOOTLIGHT  
RANCH SHREVEPORT NORTH AIRPORT (62PA)  
717/432-4441- [www.footlightranch.com](http://www.footlightranch.com)

SEPTEMBER 10 ----- TOUGKENMON, PA  
EAA CHAPTER 240 – PANCAKE BREAKFAST  
FLY-IN NEW GARDEN AIRPORT (N57)  
[www.eaa240.org](http://www.eaa240.org)

**Chapter Officers****and Contacts**

*President* ----- **Tom Russell**  
(215) 896-0623

*Vice President*  
----- **Bob McAuliffe**

*Secretary* --- **Guy Ullman**

*Treasure* ----- **Otto Blavier**  
215) 672-6598

*Tech Rep* ---- **Marty Cooke**  
(215) 822-2678

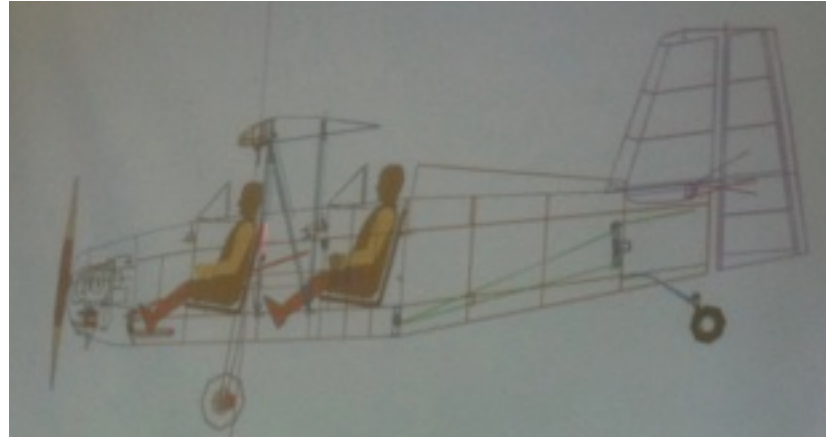
*Web Master* --- **Jeff Langer**  
215) 297-5938

*Newsletter Editor*

**Ron Gray**  
(215) 348 2748  
[Iron10@verizon.net](mailto:Iron10@verizon.net)  
[Iron10@gmail.com](mailto:Iron10@gmail.com)



It's wise to confirm dates as some events cancel without notice. Please send event data or updates to Bob Cooper – 856/694-4221 EAA CHAPTER 216 – [PL4COOP@JUNO.COM](mailto:PL4COOP@JUNO.COM) Updated – 04/10/2011 →



*Clock wise:  
Mentoring,  
Plans,  
Unidentified  
Part,  
Being  
Careful.*

